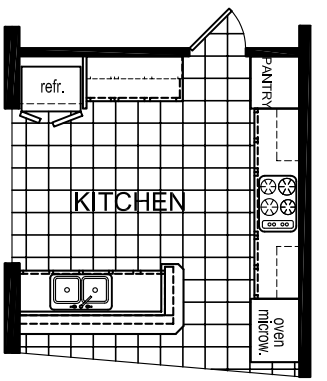


LOUISIANA MODEL 783

1,654 HEATED SQ. FT.
ACTUAL SIZE - 26'8" X 64'0"
TRANSPORTATION SIZE - 28 X 68
▲ LABEL LOCATION



BUILDING CODES:
 2006 IRC
 2006 IMC
 2006 IFGC
 2005 NEC
 2000 LOUISIANA PLUMBING CODE

OCCUPANCY:
 RESIDENTIAL - R3

CONSTRUCTION TYPE:
 VB - UNPROTECTED

INSULATION:
 ROOF R-30 OR R-38
 WALL R-13 OR R-19
 FLOOR R-19 OR R-14

**FURNACE REQUIRED - 12 KW,
 LPG / NATURAL GAS**

BUILDING IS UNSPRINKLERED

DESIGN LOADS:
 LIVE ROOF LOAD - 20 PSF
 DEAD ROOF LOAD - 15 PSF

WIND LOAD - 100 & 140 MPH

EXPOSURE "C"

SEISMIC DESIGN: C

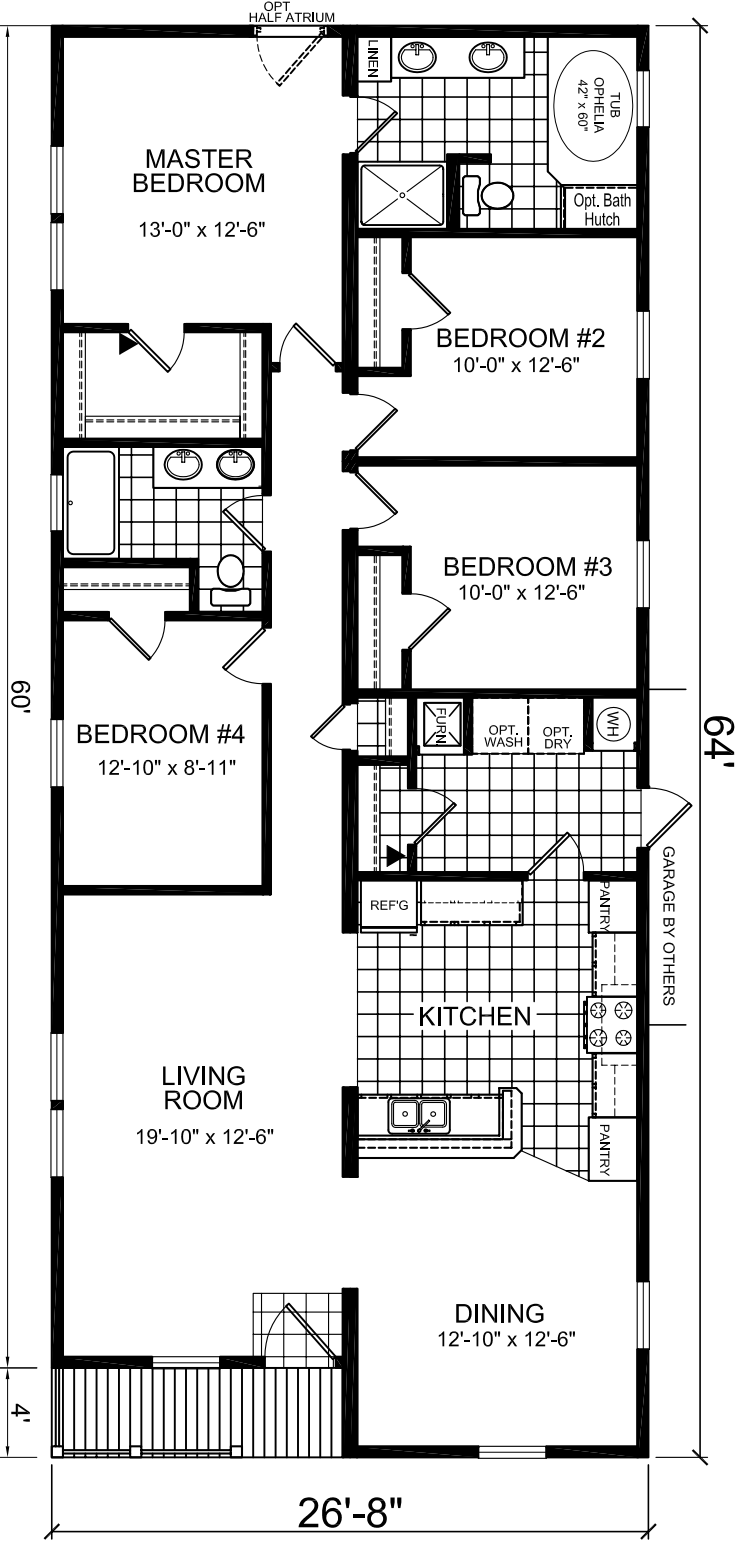
LIVE FLOOR LOAD - 40 PSF
DEAD FLOOR LOAD - 10 PSF

NUMBER OF FLOORS: 1
FLOOR AREA: 1,706 SQ. FT.

NOTE: MODEL MAYBE FLIPPED END TO END

LEGEND

L-101 - LITERATURE PLAN
 AP-101 - FLOOR PLAN
 EP-101 - ELECTRICAL PLAN
 EV-101 - ELEVATIONS
 K-101 - CABINET LAYOUT
 F-202 - TYPICAL OFF-FRAME FOUNDATION
 P-101 - DRAIN LINE PLAN
 W-101 - WATER SCHEMATIC



Champion

HOUSES OF TENNESSEE

560 ATLANTIC AVE. HENRY, TN 38231

MODIFICATIONS	SHEET:
	<p>MODEL: 21-783</p> <p>TITLE: LITERATURE PLAN</p> <p>DRAWN BY: DIV-21 DATE: 2006</p> <p>SCALE: 1/8" = 1'-0"</p> <p style="font-size: 2em; font-weight: bold; text-align: center;">L-101</p>