

**BUILDING CODES:**

2006 IRC  
2006 IMC  
2006 IFGC

2005 NEC  
2000 LOUISIANA PLUMBING CODE

OCCUPANCY:  
RESIDENTIAL - R3

CONSTRUCTION TYPE:  
VB - UNPROTECTED

INSULATION:  
ROOF R-30 OR R-38

WALL R-13 OR R-19  
FLOOR R-19 OR R-14

FURNACE REQUIRED - 12 KW.  
LPG / NATURAL GAS

BUILDING IS UNSPRINKLERED

DESIGN LOADS:  
LIVE ROOF LOAD - 20 PSF  
DEAD ROOF LOAD - 15 PSF

WIND LOAD - 120 & 140 MPH  
EXPOSURE "C"

SEISMIC DESIGN: C  
LIVE FLOOR LOAD - 40 PSF

DEAD FLOOR LOAD - 10 PSF  
NUMBER OF FLOORS: 1

FLOOR AREA: 1,546 SQ. FT.

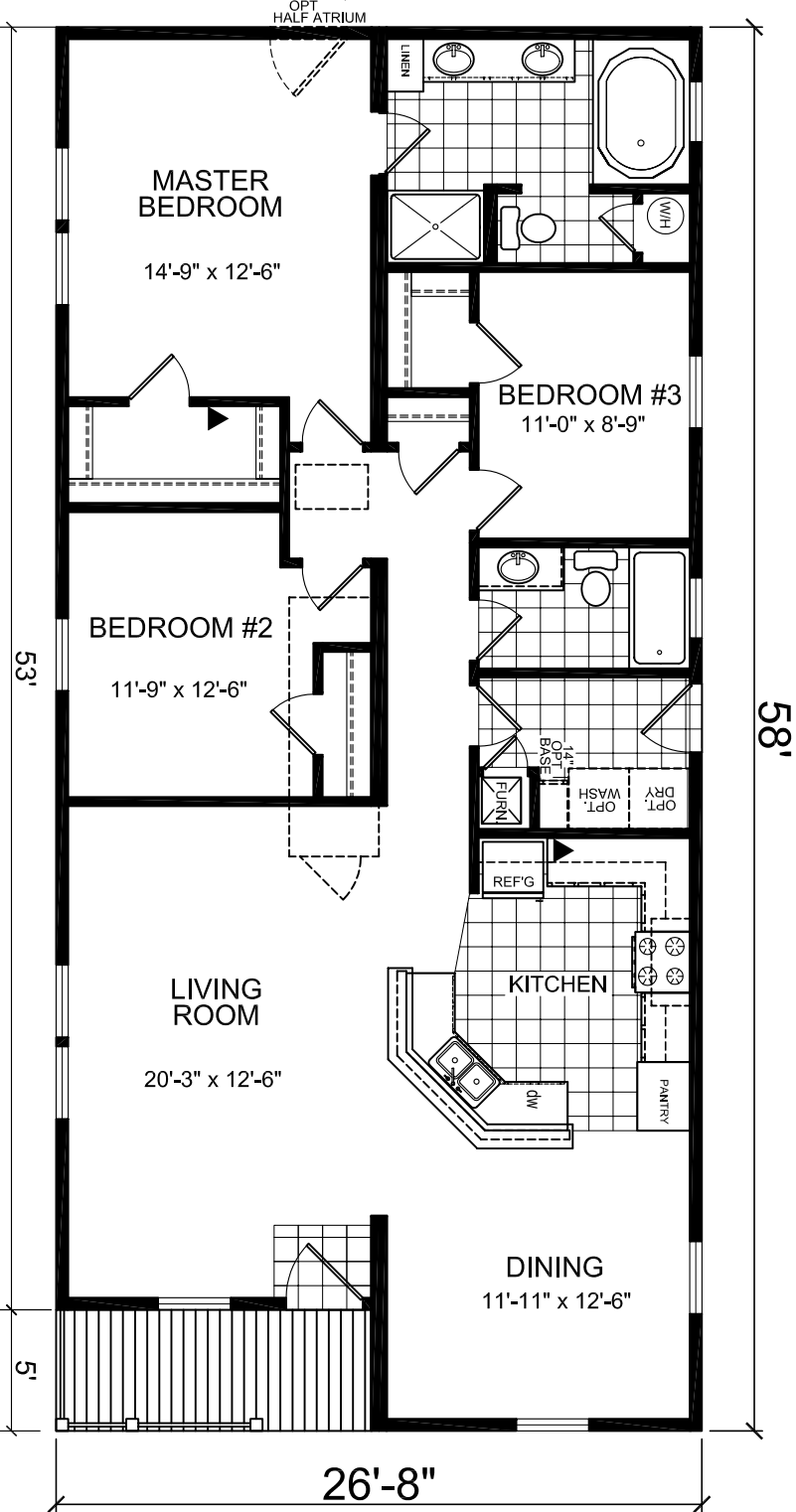
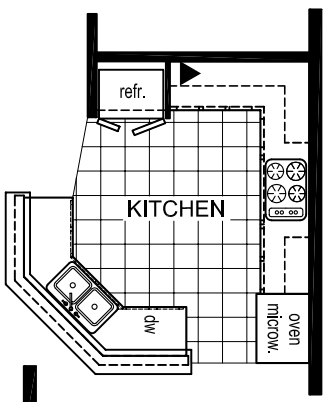
NOTE: MODEL MAYBE FLIPPED END TO END  
LOCATION: Chalmette, LA 70043

**LEGEND**  
L-101 - LITERATURE PLAN  
AP-101 - FLOOR PLAN  
EP-101 - ELECTRICAL PLAN  
EV-101 - ELEVATIONS  
CB-101 - CABINET LAYOUT  
F-101 - TYPICAL ON-FRAME FOUNDATION  
F-102 - TYPICAL OFF-FRAME FOUNDATION  
PP-101 - DRAIN LINE PLAN  
WP-101 - WATER SCHEMATIC

1,480 HEATED SQ. FT.  
ACTUAL SIZE - 26'8" X 58'0"  
TRANSPORTATION SIZE - 28 X 62  
▲ LABEL LOCATION  
NOTE: WALL HEIGHT - 9'

# LOUISIANA MODEL 782

1,480 HEATED SQ. FT.  
ACTUAL SIZE - 26'8" X 58'0"  
TRANSPORTATION SIZE - 28 X 62  
▲ LABEL LOCATION  
NOTE: WALL HEIGHT - 9'



# Champion

HOMES OF TENNESSEE

560 ATLANTIC AVE. HENRY, TN 38231

DAPIA SEAL

MODIFICATIONS

MODEL: 21-782

29'-0" X 58'-0" 3 BEDROOM / 2 BATH

TITLE: LITERATURE PLAN

DRAWN BY: DIV-21

DATE: 04-18-06

SCALE: 1/8" = 1'-0"

SHEET:

# L-101

PROPRIETARY AND CONFIDENTIAL  
THESE DRAWINGS AND SPECIFICATIONS ARE ORIGINAL,  
PROPRIETARY AND CONFIDENTIAL MATERIALS OF CHAMPION.  
COPYRIGHT © 1976-2006 BY CHAMPION