



CHAMPION HOMES OF TENNESSEE

560 ATLANTIC AVE. HENRY, TN 38231

DAPIA SEAL

MODIFICATIONS

MODEL: 21-781

SHEET:

TITLE: LITERATURE PLAN

L-101

DRAWN BY: SJB

DATE: 02-23-06

PROPRIETARY AND CONFIDENTIAL. THESE DRAWINGS AND SPECIFICATIONS ARE ORIGINAL, PROPRIETARY AND CONFIDENTIAL MATERIALS OF CHAMPION. COPYRIGHT © 1978-2006 BY CHAMPION

BUILDING CODES:

- 2006 IRC
- 2006 IBC
- 2006 NEC
- 2006 LUISIANA PLUMBING CODE

OCCUPANCY:

- RESIDENTIAL - R3

CONSTRUCTION TYPE:

- VB - UNPROTECTED

INSULATION:

- ROOF R-30
- WALL R-19
- FLOOR R-19
- FLUORAGE REQUIRED - 12 KW.
- LPG / NATURAL GAS
- BUILDING IS UNSPRINKLERED

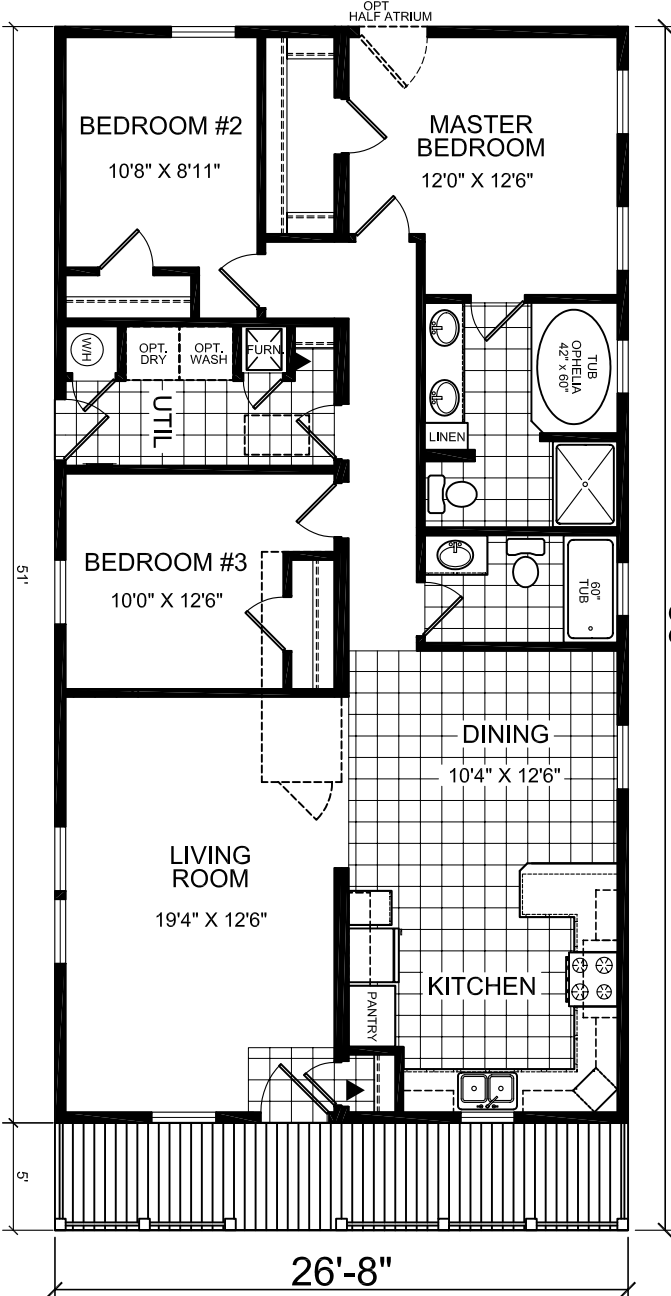
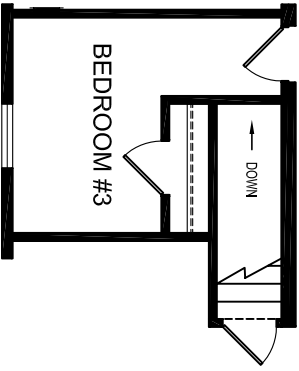
DESIGN LOADS:

- LIVE ROOF LOAD - 20 PSF
- DEAD ROOF LOAD - 15 PSF
- WIND LOAD - 120 & 140 MPH
- EXPOSURE 'C'
- SEISMIC DESIGN: C
- LIVE FLOOR LOAD - 40 PSF
- DEAD FLOOR LOAD - 10 PSF
- NUMBER OF FLOORS: 1
- FLOOR AREA: 1,493 SQ. FT.

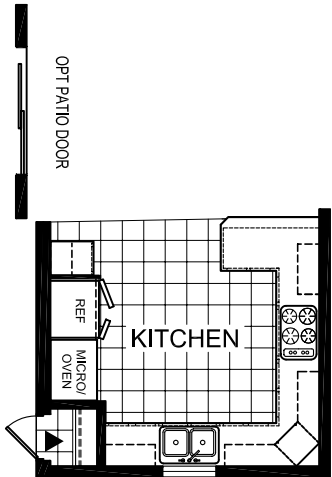
NOTE: MODEL MAYBE FLIPPED END TO END
 NOTE: MODEL MAYBE FLIPPED SIDE TO SIDE
 LOCATION: Chalmette, LA 70043

LEGEND

- L-101 - LITERATURE PLAN
- AP-101 - FLOOR PLAN
- EP-101 - ELECTRICAL PLAN
- CB-101 - CABINET LAYOUT
- EV-101 - ELEVATIONS
- F-202 - TYPICAL OFF-FRAME FOUNDATION
- PP-101 - DRAIN LINE PLAN
- WP-101 - WATER SCHEMATIC



LOUISIANA MODEL 781
 1,360 HEATED SQ. FT.
 ACTUAL SIZE - 26'8" X 51'0"
 ACTUAL SIZE w/ porch - 26'8" X 56'0"
 TRANSPORTATION SIZE - 28' X 60'
 ▲ LABEL LOCATION
 NOTE: WALL HEIGHT - 9'



OPT ULTKIT

OPT PATIO DOOR

OPT HALF ATRIUM

ADD JOIST