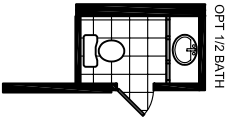


- LEGEND**
- L-101 - LITERATURE PLAN
 - AP-101 - FLOOR PLAN
 - EP-101 - ELECTRICAL PLAN
 - A-103 - TYPICAL CROSS SECTION OFF-FRAME
 - EV-101 - ELEVATIONS
 - CB-101 - CABINET LAYOUT
 - F-101 - TYPICAL OFF-FRAME FOUNDATION
 - F-102 - FOUNDATION DETAILS
 - F-104 - FOUNDATION DETAILS
 - P-101 - DRAIN LINE PLAN
 - W-101 - WATER SCHEMATIC
 - TN-AH-13 ELEC CALC
 - TN-AH-13 RES CHECK
 - TN-AH-13 TRUSS
 - TN-AH-13 TYPING
 - TN-AH-13 TRUSS
 - Pc266001 TRUSS

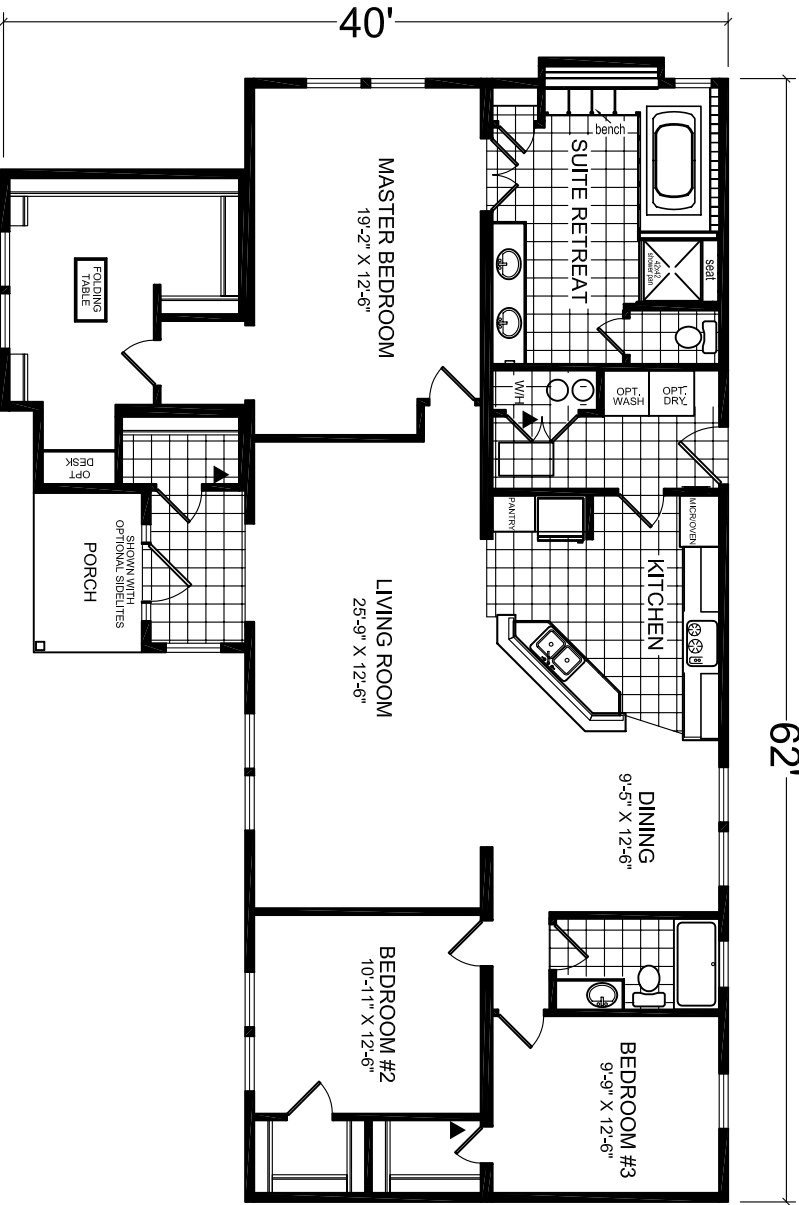
BUILDING CODES:
 2003 IRC
 2003 EEC
 2002 NEC
 SAFETY GLAZING MATERIALS, TN CODE ANN, TITLE 68 CHAPTER 120, PART 3, WHERE APPLICABLE

OCCUPANCY: R-3
CONSTRUCTION TYPE: V8 - UNPROTECTED
INSULATION:
 ROOF R-30 OR R-38
 WALL R-13 OR R-19
 FLOOR R-19 OR R-14
 FURNACE REQUIRED - 12 KW,
 LPG / NATURAL GAS
 BUILDING IS UNSPRINKLERED

DESIGN LOADS:
 LIVE ROOF LOAD - 20 PSF
 SNOW ROOF LOAD - 20 PSF
 WIND LOAD - 100 MPH
 EXPOSURE 'C'
 SEISMIC DESIGN: D1
 LIVE FLOOR LOAD - 40 PSF
 DEAD FLOOR LOAD - 10 PSF
 NUMBER OF STOREYS: 1
 FLOOR AREA: 1,990 SQ. FT. W/ PORCH
 HEIGHT FROM GRADE: 19'-5"
 NOTE: MODEL MAYBE FLIPPED END TO END OR SIDE TO SIDE
 LOCATION: PARIS, TN



**SHOWN W/
 SUITE RETREAT**



**TENNESSEE
 MODEL 761**

1,937 HEATED AREA
 ACTUAL SIZE - 40'-0" X 62'0"
 TRANSPORTATION SIZE - 42' X 66'
 LABEL LOCATION ▲
 NOTE: WALL HEIGHT - 8' - OPTIONAL - 9'
 TENNESSEE PLAN # AH1-13

<p>PROJECT</p>	<p>CHAMPION HOMES OF TENNESSEE</p> <p>560 ATLANTIC AVE. HENRY, TN 38231</p>	<p>TITLE: LITERATURE PLAN</p> <p>MODEL: 21-761</p> <p>40'-0" x 62'-0" 3 BEDROOM 2 BATH</p> <p>DATE: 07/08 SCALE: DRAWN BY: SJB REVISIONS:</p> <p>SHEET NO.: L-101</p> <p>PAGE:</p>
-----------------------	---	--