

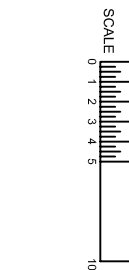
TENNESSEE MODEL 737

1,920 HEATED AREA

ACTUAL SIZE - 26'8" X 72'0"

TRANSPORTATION SIZE - 28 X 76

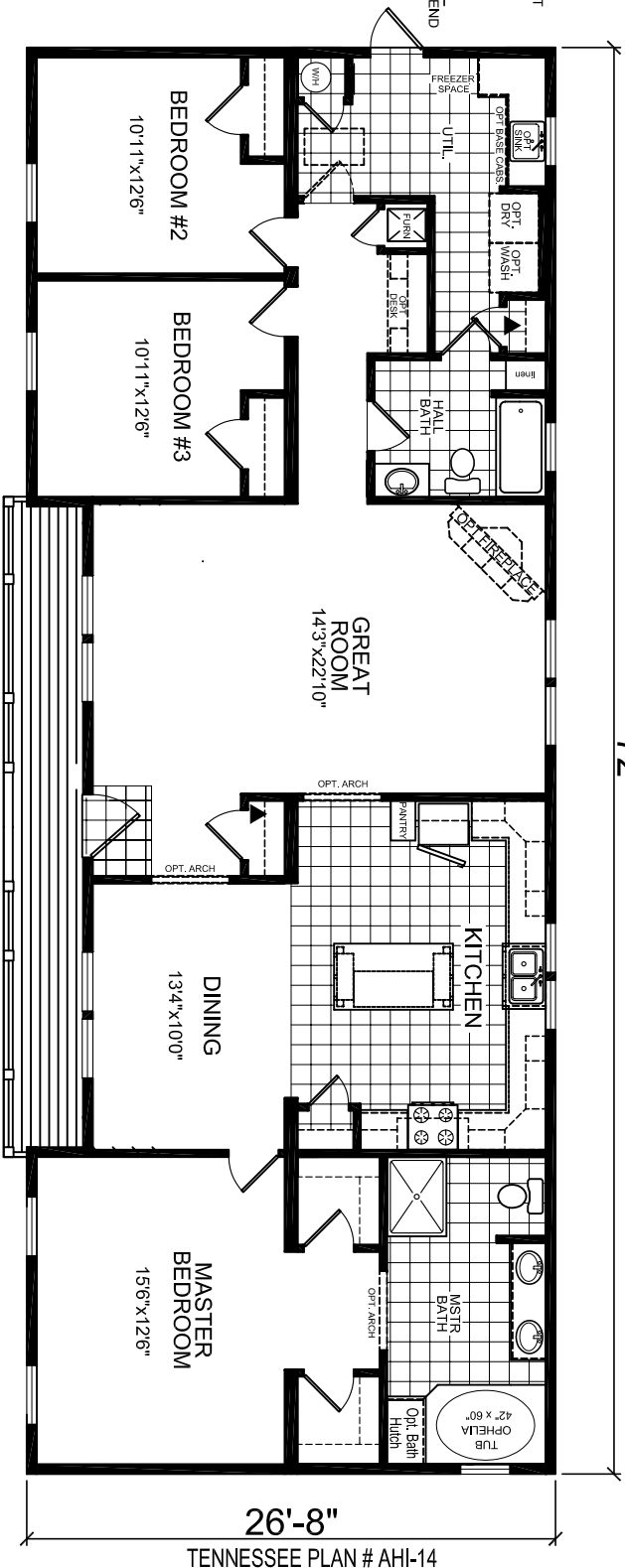
▲ LABEL LOCATION



OPT. 6680 ATRIUM DOOR

72'

- LEGEND**
- L-101 - LITERATURE PLAN
 - AP-101 - FLOOR PLAN
 - EP-101 - ELECTRICAL PLAN
 - EV-101 - ELEVATIONS
 - A-103 - TYPICAL CROSS SECTION OFF-FRAME
 - A-104 - TYPICAL CROSS SECTION ON-FRAME
 - CP-101 - CABINET LAYOUT
 - F-101 - PERIMETER FOUNDATION
 - F-102 - FOUNDATION PLAN - 100 MPH WIND (TYP)
 - F-202 - TYPICAL OFF-FRAME FOUNDATION - 100 MPH WIND (TYP)
 - P-101 - DRAIN LINE PLAN
 - WP-101 - WATER SCHEMATIC
 - TN-AHH-14 ELEC CALC
 - TN-AHH-14 RESCHECK
 - TN-AHH-14 HVAC
 - F681401 TRUSS
 - HM719101 TRUSS



26'-8"
TENNESSEE PLAN # AHI-14

BUILDING CODES:
2003 IRC
2003 NEC
SAFETY GLAZING MATERIALS, TN CODE ANN.
TITLE 68, CHAPTER 120, PART 3, WHERE APPLICABLE

OCCUPANCY:
RESIDENTIAL - R3
CONSTRUCTION TYPE:
VB - UNPROTECTED
INSULATION:
ROOF R-30 OR R-38
WALL R-13 OR R-19
FLOOR R-19 OR R-14
FURNACE REQUIRED - 12 KW,
BUILDING IS UNSPRINKLERED

DESIGN LOADS:
LIVE ROOF LOAD - 20 PSF
SNOW ROOF LOAD - 20 PSF

WIND LOAD - 100 MPH
90 MPH EXPOSURE "C"
SEISMIC DESIGN - C-S1D, D1 & D2-OPT
LIVE FLOOR LOAD - 40 PSF
DEAD FLOOR LOAD - 10 PSF
NUMBER OF STORIES: 1
FLOOR AREA: 1,920 SQ. FT.
HEIGHT FROM GRADE: 18'0" 1/2"

NOTE: MODEL MAYBE FLIPPED END TO END
OR SIDE TO SIDE
LOCATION: PARIS, TN



Champion
HOMES OF TENNESSEE

560 ATLANTIC AVE, HENRY, TN 38231

DAPIA SEAL

MODIFICATIONS

MODEL: 21-737

SHEET: L-101

3 BEDROOM, 2 BATH

LITERATURE PLAN

DRAWN BY: S. BROOKS

DATE: 2007

PROPRIETARY AND CONFIDENTIAL
THESE DRAWINGS AND SPECIFICATIONS ARE ORIGINAL,
PROPRIETARY AND CONFIDENTIAL MATERIALS OF CHAMPION.
COPYRIGHT © 1978-2008 BY CHAMPION

SCALE: 1/8" = 1'-0"